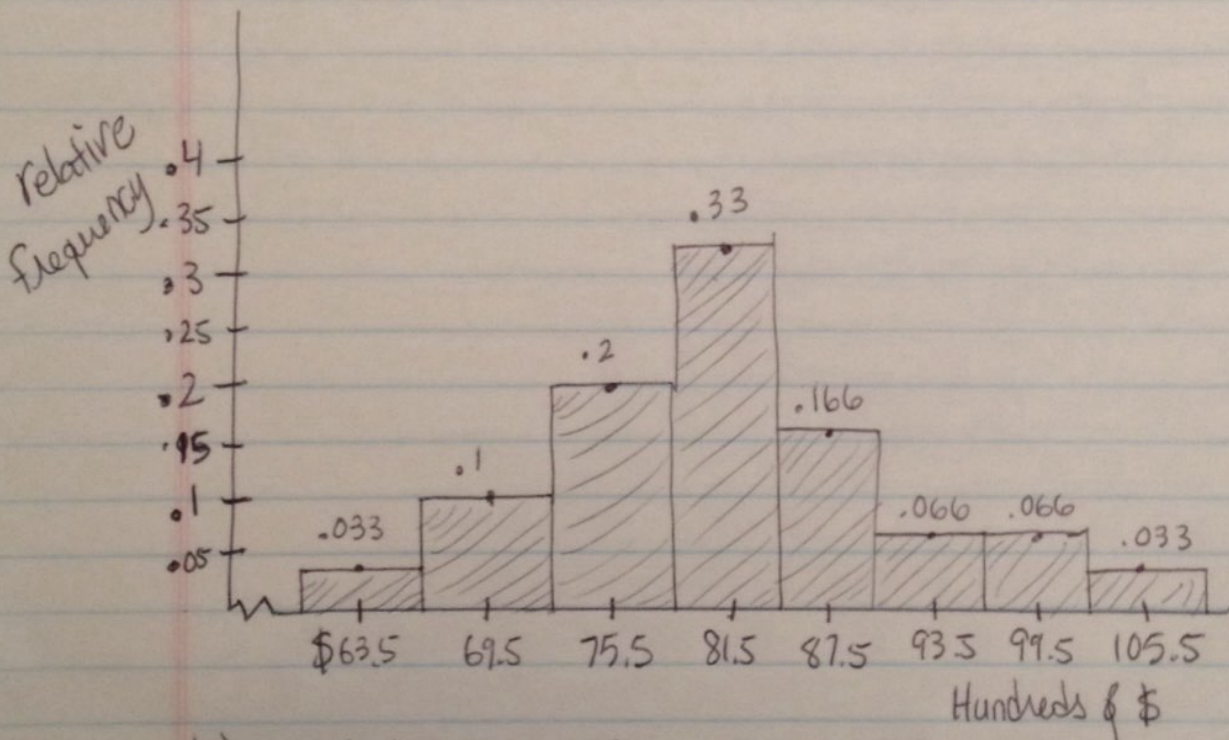


Pg 54

45a Max 104 min 61 8 classes

$$\text{Class width} = \frac{104 - 61}{8} = \frac{43}{8} = 5.75 \text{ round up } \rightarrow 6$$

Class	tally	f, frequency	relative frequency	midpoints
61 - 66		1	$1/30 = .0\bar{3}$	63.5
67 - 72		3	$3/30 = .1$	69.5
73 - 78		6	$6/30 = 0.2$	75.5
79 - 84		10	$10/30 = .\bar{3}$	81.5
85 - 90		5	$5/30 = .1\bar{6}$	87.5
91 - 96		2	$2/30 = .0\bar{6}$	93.5
97 - 102		2	$2/30 = .0\bar{6}$	99.5
103 - 108		1	$1/30 = .0\bar{3}$	105.5
total		30	total .999 $\approx 1$	



b.)  $.066 + .066 + .033 = .165 = 16.5\%$

16.5% of the days, you will run out of cash. The last three bars on the histogram represent the percent of data entries at or above \$9000.

c.) You should have \$9600 in the machine. The last two bars add up to about 10% 96 is the last upper class limit below that.